



**Strip Builder (PST) "SS" Series Row Units
Bifold Row Markers
&
PST Pull Package
Owners & Parts Manual**

Warranty Policy

Remlinger Manufacturing will warrant all products against defects in material and workmanship manufactured and sold by it. Warranty will only be granted after examination by appropriate personnel. This warranty is expressly limited to the replacement of defective products. This warranty does not obligate Remlinger Manufacturing to cover cost of labor to replace these parts. This warranty is in effect for 1 year after purchase.

Remlinger Manufacturing warrants its own products only and cannot be responsible for damages to equipment on which it is attached or mounted.

For questions about your PST and/or attachments contact:

Remlinger Manufacturing Company Inc.
16394 U.S. 224
Kalida, OH 45853

Phone: 1-800-537-7370
Email: technicalsupport@remlingermfg.com
Website: www.remlingermfg.com

Table of Contents

Safety	3
Pre Assembly Instructions	4
Recommended Torque Specifications	4
Adjusting the PST Row Units	5
Adjusting the Shank.....	5
Adjusting the Closing Blades.....	5
Adjusting the Trash Wheels	5
Adjusting the Spring Reset Option	5
Adjusting the PST Options	6
Caution	6
Adjusting the Tool Bar	6
Adjusting the Markers (Remlinger Bifold).....	6
Adjusting the Pull Package.....	6
Maintaining the PST	7
Row Unit Lubrication	7
Bifold Marker Lubrication.....	7
Pull Package Lubrication.....	7
Troubleshooting	8
Row Unit Parts Diagram - Shank	10
Row Unit Parts Description - Shank	11
Row Unit Parts Diagram - Coulter	12
Row Unit Parts Description - Coulter	13
Row Unit Parts Diagram - Closing Disk	14
Row Unit Parts Description - Closing Disk	15
6 & 8 Row Rigid 3 Point Toolbar Parts Diagram	16
6 & 8 Row Rigid 3 Point Toolbar Parts Description	17
8 & 12 Row Folding 3 Point Toolbar Parts Diagram	18
8 & 12 Row Folding 3 Point Toolbar Parts Description	19
PST Pull Package Parts Diagram	20
PST Pull Package Parts Description	21
Bifold Row Markers Parts Diagram	22
Bifold Row Markers Parts Description	23
PST Roller Parts Diagram	24
PST Roller Parts Description	25
Registration Information	26
Registration Form - “SS” Series Precision Strip Till	27

Notes

Safety

- Never attempt to operate or adjust the Precision Strip Till (PST) without reading this manual.
- Never allow anyone to ride on the toolbar or other attachments.
- Drive slowly over rough ground.
- Always slow down when turning.
- Always support the Toolbar and / or Row Units when mounting or working on the PST or other attachments.
- Never attempt to adjust the PST while it is in motion.
- Periodically check bolts and replace worn ones.
- Be careful around teeth, tines, sweeps, and blades; they get sharper with wear.
- Periodically check tires for wear and proper inflation.
 - 7.60-15 8 ply **52 psi max**
 - 9.5L-15 8 ply **44 psi max**
- Hydraulics:
 - When installing hydraulic hose, make sure all connections are tight and cylinders are full of hydraulic oil.
 - Relieve pressure in hydraulic lines before uncoupling hoses from source.
 - Check for and correct all points of abrasion of hydraulic hose. **Do not use a partially damaged hose.**

Never attempt sharp turns with the PST units in the ground.

Pre Assembly Instructions

1. All references to right hand and left hand sides of the implement are determined by facing the machine from the rear.
2. Check your packing lists and report any missing or damaged parts as soon as possible.
3. Lubricate all moving parts and bearings as recommended.
4. Follow assembly instructions in the order shown.
5. This owner's manual should be given to the owner for their reference.
6. Please call if additional manuals are required.

Recommended Torque Specifications

Thread Size	ft -lbs	N - m
1/4"-20	9 - 11	12 - 15
3/8"-16	35 - 42	48 - 57
7/16"-14	54 - 64	73 - 87
1/2"-13	80 - 96	109 - 130
5/8"-11	150 - 180	203 - 244
3/4"-10	270 - 324	366 - 439
1"-8	580 - 696	787 - 944

The above specifications apply to SAE Grade 5 Fasteners.

Adjusting the PST Row Units

Adjusting the Shank

Depth - The shank can be set to three different depths 5", 6 1/2", and 8". The depth is preset to 6 1/2" from the factory. Remove the two 3/4" bolts and place the shank into the desired position. Replace the bolts. We offer an optional bolt on adapter to attach a mole knife in place of the shank.

Wear Bar - A reversible wear bar is located on the front of the shank. Average wear will vary with soil type.

Fertilizer Tube – (Optional) The multi purpose fertilizer tube is located on the rear of the shank. The tube allows the application of NH₃, liquid or dry types of fertilizer. The tube places fertilizer towards the bottom of the strip.

Adjusting the Closing Blades

Location and Rotation - The object of the closing blades is two fold. First, the blades need to catch any soil shattering off the shank. Second, they need to roll the soil back onto the strip. However, do not roll the residue onto the strip. The blade can be rotated and moved forward and back. Loosen the 1/2" u-bolt and move the blade to the desired position. Tighten the u-bolt.

Down Pressure – Down pressure can be changed by moving the spring pin on the body of the spring rod up or down. Both sides must be adjusted the same.

Depth – Depth adjustments can be accomplished by turning the 5/8" lock nut on the top end of the spring rod in or out. Both sides must be adjusted the same.

Adjusting the Trash Wheels

Depth - The trash wheels do not have down pressure. Both wheels and bracket float. There is a lower limit stop on each side of the main frame that limits the depth of the wheels. The stop is a square block with a hole drilled off of center. Loosen the 1/2" bolt and rotate the block to the desired position and tighten the bolt.

Width - The wheels have two width settings. The wheels are preset from the factory in the widest position. Remove the 5/8" bolt from the back of the trash wheel hub. Position the wheel in the desired location and replace the bolt.

Adjusting the Spring Reset Option

Spring Tension - The spring reset is preset at the factory. The preset tension will protect the row unit from rocks that do not hook the shank. If there are large rocks or tree roots that will hook the shank, we recommend decreasing the spring tension.

Adjusting the PST Options

Caution

The LH and RH outer row units have a transport lock on the 4, 6, 8, & 12 row tool bars. This lock is only used when the tool bar is free standing. Remember to **remove the pin before going to the field**. The lock is painted **Orange** and is pinned between the two parallel links.

Never attempt sharp turns with the PST units in the ground.

Adjusting the Tool Bar

3 pt Hitch - The 4, 6, and 8 row rigid tool bars are preset at the factory with a cat. II & III hitch spacing. They can be changed to a cat. III N. The 8 and 12 row folding tool bars are preset to a cat. III spacing and can not be changed. For clearance problems we offer a 6" bolt on extension kit for the 8 and 12 row folding tool bar 3 pt. hitch.

Adjusting the Markers (Remlinger Bifold)

Mark Size - Loosen the two 1/2" carriage bolts. Rotate the disk blade assembly to produce the desired width. Tighten the 1/2" carriage bolts. The outer arm of the Bifold marker should run approximately parallel to the ground when in field operation. This allows the disk blade to operate at the proper angle to the ground, thus reducing the rotation angle required. For heavy residue we offer optional marker weights that slide inside the outer marker arm.

Length - Loosen the three 1/2" bolts on the outer arm. Slide the tube in or out to the desired length. Tighten the 1/2" bolts.

Folding Speed - The markers are preset at the factory to operate at 10 - 12 seconds per side. This will vary depending on the make and model of the tractor. **Do not set faster than 8 seconds per side**. To adjust the folding speed, use the adjusting bolts located on the marker system valve. Turn the adjusting bolt "**in**" to **decrease** and "**out**" to **increase** speed.

Adjusting the Pull Package

Clevis Height - Remove the two 1" bolts and move the clevis up or down. Replace the bolts.

Tool Bar - The top link on the PST Pull Package is rigid and should not need adjustment. Donut collars (not supplied) may be used to control the height of the toolbar if needed.

Maintaining the PST

Row Unit Lubrication

Use SAE Multi Purpose Grease

1. Trash Wheel Hub (2 locations) - **Every 50 Hours**
Located behind each trash wheel.
2. Coulter Blade Hub (1 location) - **Every 50 Hours**
Located inside the depth band on the lower end of the main frame.
3. Parallel Link Pin (4 locations) - **Every 25 Hours**
Located between the mounts to the tool bar and the main frame.
4. Disk Blade Hub (2 locations) - **Every 50 Hours**
Located behind each disk blade.
5. Disk Blade Arm Frame Pin (2 locations) - **Every 25 Hours**
Located on the front inside of the arm frame tube.

Bifold Marker Lubrication

Use SAE Multi Purpose Grease

1. Main Hinge Pin (1 each marker) - **Every 25 Hours**
Located on the first hinge near the base of the cylinder.
2. Outer Hinge Pin (1 each marker) - **Every 25 Hours**
Located on the second hinge near the clevis of the cylinder.
3. Disk Blade Hub (1 each marker) - **Every 50 Hours**
Located behind disk blade.

Pull Package Lubrication

Use SAE Multi Purpose Grease

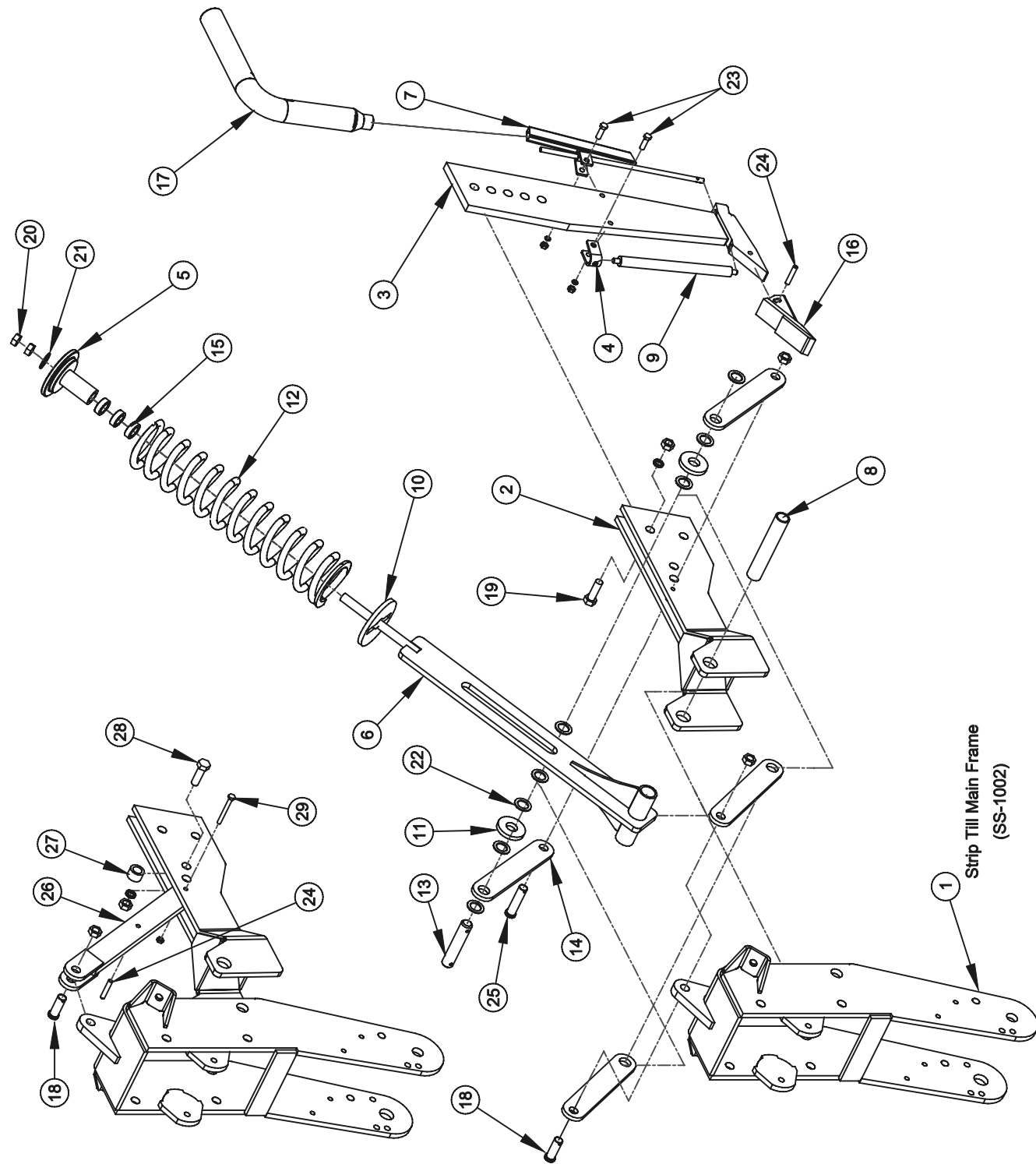
1. Transport Pivot Pin (2 locations) - **Every 25 Hours**
Located on the top inside of the wheel arm tube near the base of the lift cylinder.
2. Lower 3 Point Pin (2 locations) - **Every 25 Hours**
Located on the end of the hitch between the lower 3 point links.
3. Top Link Pin (2 locations) - **Every 25 Hours**
Located on both ends of the top link.
4. Top Link Threads (2 locations) - **Every 50 Hours**
Located on both ends of the top link.
5. Transport and Gage Wheel Bearings - Pack wheel bearings once a year or **every 50 Hours**. Also, raise the tires off the ground and check for end play. To eliminate the end play, remove dust cap and cotter pin. Tighten slotted nuts until there is noticeable resistance and back off one slot. Replace cotter pin and dust cap.

Troubleshooting

Problem	Cause	Solution
Parallel Links unparallel	Toolbar out of Adjustment	Rotate the top link to flatten the top of the toolbar. Adjust the height of the toolbar. Bottom of bar should be approximately 22" off ground.
Shank not Tripping	Excessive Spring Pressure	Back off the two 3/4" nuts to relieve the reset spring pressure.
	Spring travel Pin Seized	Oil the center spring travel pin, remove the spring and manually trip the shank to loosen the seized pin.
	Worn Linkage Parts	Check upper and lower linkage pins for wear. Also check for bent or worn linkage bars.
Residue Plugging	Trash wheels too high	Loosen the 1/2" bolt and rotate the Stop Block to a lower position and tighten the bolt.
	Heavy Residue (Corn to Corn)	The trash wheels are floating on top of the corn residue and not pushing it aside. Optional trash wheel lock down kits are available
Residue in Strip	Closing Disk too wide in front	Narrow the gap between the fronts of the Closing Disk to keep residue from rolling back into strip.
	Heavy Residue (Corn to Corn)	The trash wheels are floating on top of the corn residue and not pushing it aside. Optional trash wheel lock down kits are available.

Plugging behind Shank	Closing Disk too narrow in rear	Widen the gap between the rears of the Closing Disk to allow the soil to flow.
Plugging front of Shank	Coulters Worn	Coulters are dull or worn and should be replaced.
	Trash wheels too high	Loosen the 1/2" bolt and rotate the Stop Block to a lower position and tighten the bolt.
	Heavy Residue (Corn to Corn)	The trash wheels are floating on top of the corn residue and not pushing it aside. Optional trash wheel lock down kits are available
Gouging along Strip	Closing Disk to low	Depth adjustments can be accomplished by turning the 5/8" lock nut on the top end of the spring rod in or out. Both sides must be adjusted the same.
	Excessive Disk Pressure	Down pressure can be changed by moving the spring pin on the body of the spring rod up or down. Both sides must be adjusted the same.
Rows not Penetrating	Toolbar out of Adjustment	Rotate the top link to flatten the top of the toolbar.
	Coulters Worn	Coulters are dull or worn and should be replaced.
	Ripper Points Worn	Points are worn and not allowing the row to pull into the ground. Points should be replaced.
	Hard Compacted Soils	Rows may need additional force to penetrate harder soils. Optional down pressure spring kit is available.

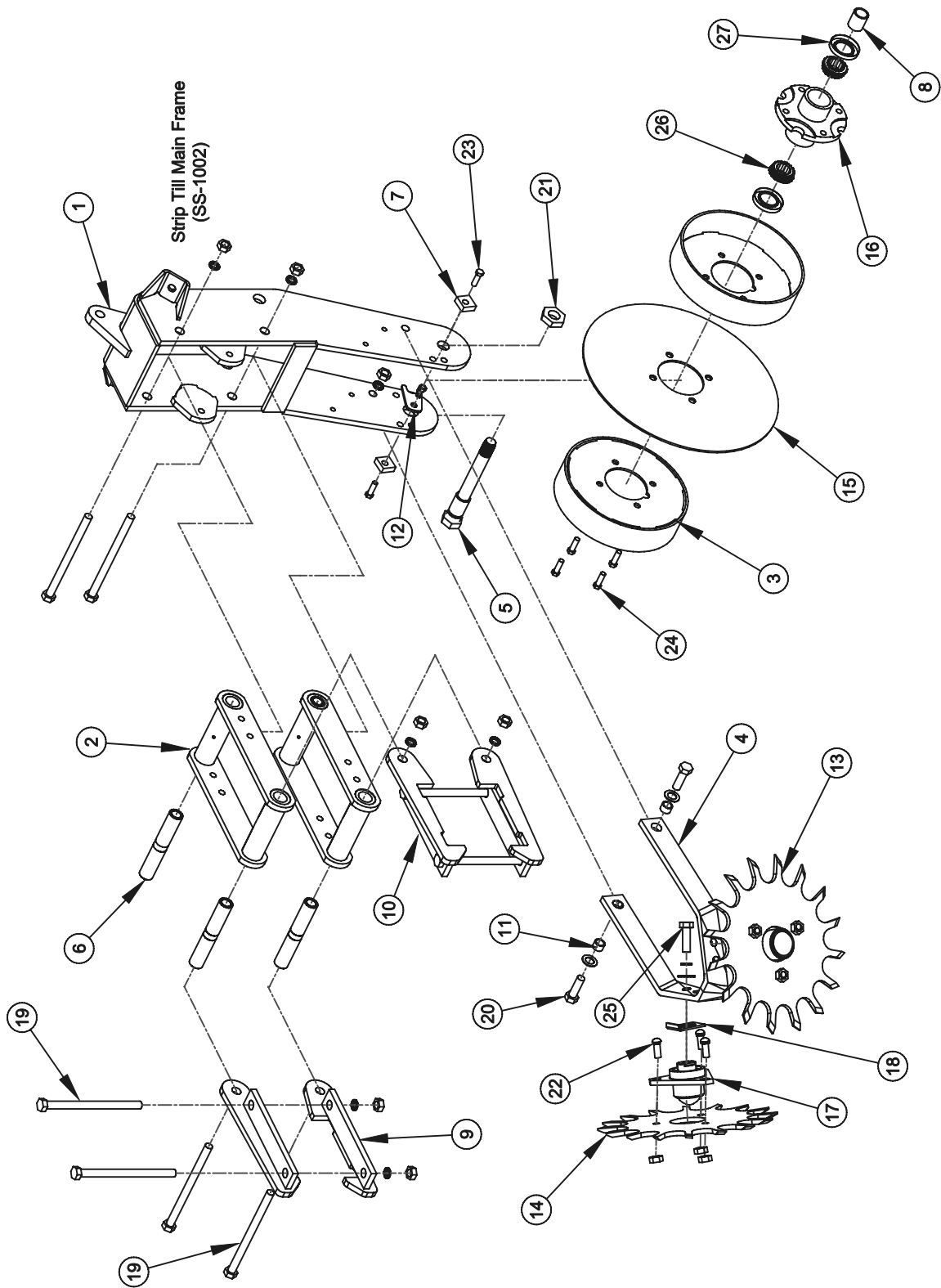
Row Units Parts Diagram - Shank



Row Unit Parts Description - Shank

Item No.	Part No.	Part Name / Description
1	SS-1002	Main Frame Assembly
2	ST-1005	Shank Arm Assembly
3	ST-1013	Shank Assembly
4	ST-1015	Strap Assembly
5	ST-1016	Spring Cap Assembly
6	ST-1017	Spring Travel Rod Assembly
7	ST-1043 ST-1058	NH3 & Dry Fertilizer Tube Assembly – Optional NH3 & Liquid Fertilizer Tube Assembly – Optional
8	ST-0024	Shank Arm Pivot Bushing
9	ST-0046	Shank Protector
10	ST-0067	Lower Spring Stop
11	ST-0069	Spring Roller
12	ST-0072	Reset Spring
13	ST-0074	Spring Travel Pin w/ Machine Bushings & 3/16" x 2" Cotter Pin
14	ST-0075	Spring Linkage Bar
15	ST-0077	Spring Tension Spacer
16	ST-0128	2" Ripper Point
17	ST-1077 ST-1078	1 1/2" Diffuser Tube Assembly – Optional 2" Diffuser Tube Assembly – Optional
18	SS-0262	Upper Reset Pin w/ (2) 3/4" Machine Bushing & Cotter Pin
19	ST-0207	3/4"-10 x 2 15/16" Gr. 8 Bolt w/ Lock washer & Nut
20		3/4" Hex Nut
21		3/4" Flat washer
22	SS-0266	1" UHMW Flat washer
23		3/8"-16 x 1 3/4" Bolt w/ Lock washer & Nut
24		3/8" x 1 1/2" Roll Pin
25	SS-0267	Lower Reset Pin w/ (2) 3/4" Machine Bushing & Cotter Pin
26	ST-1012	Trip Link Assembly
27	ST-0033	Shank Arm Spacer
28		3/4"-10 x 3" Bolt w/ Lock washer & Nut
29		5/16"-18 x 3" Bolt w/ Locknut

Row Units Parts Diagram - Coulter



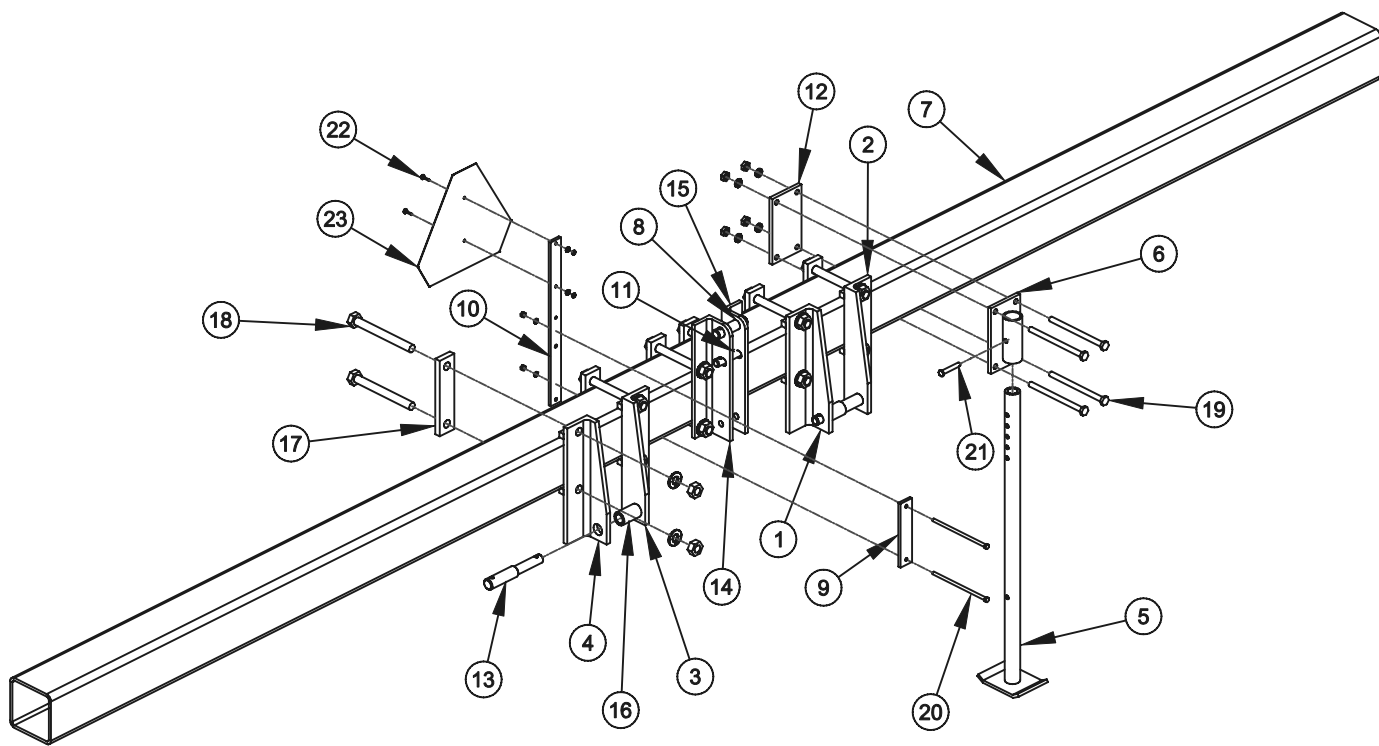
Row Unit Parts Description - Coulter

Item No.	Part No.	Part Name / Description
1	SS-1002	Main Frame Assembly
2	SS-1001	Parallel Link Assembly
3	ST-1003	Depth Wheel Assembly
4	ST-1010	Trash Wheel Bracket Assembly
5	ST-1014	Coulter Axle Assembly
6	SS-0003	Parallel Link Bushing
7	ST-0014	Trash Wheel Stop
8	ST-0015	Coulter Hub Spacer
9	SS-1087 SS-1091 SS-1100	LH 7" x 7" Mount Assembly (shown) LH 5" x 7" Mount Assembly LH 5" x 7" Offset Mount Assembly
10	SS-1088 SS-1092 SS-1101	RH 7" x 7" Mount Assembly (shown) RH 5" x 7" Mount Assembly RH 5" x 7" Offset Mount Assembly
11	ST-0032	Trash Wheel Pivot Bushing
12	ST-0061	Coulter Axle Retainer
13	ST-0148	Left-hand Trash Wheel
14	ST-0149	Right-hand Trash Wheel
15	ST-0152 ST-0153 ST-0262	17" Coulter Blade 20" Coulter Blade 17" Turbo Blade (GP 820-156C)
16	ST-0163	Coulter Hub with Races
17	ST-0172	Trash Wheel Hub
18	ST-0173	D-Lock Bracket
19		3/4"-10 x 9" Bolt w/ Lock washer & Nut
20		5/8"-11 x 2" Bolt w/ Flat washer, Lock washer & Nut
21		1" Hex Jam Nut
22		7/16"-16 x 1 1/2" Carriage Bolt w/ 7/16" Flange Nut
23		1/2"-13 x 1 3/4" Bolt w/ Lock washer & Nut
24		1/2"-20 x 1 1/2" Flange Bolt w/ Lock washer
25		5/8"-11 x 1 1/2" Bolt w/ Flat washer & Lock washer
26	ST-0181	Hub Bearing (L44643)
27	ST-0182	Hub Seal (CR12437)

Row Unit Parts Description - Closing Disk

Item No.	Part No.	Part Name / Description
1	SS-1002	Main Frame Assembly
2	ST-1004	Disk Spring Adj. Assembly w/ 5/8" Flatwasher, Locknut & #10 Keeper Pin
3	ST-1006	Disk Blade Spindle Assembly
4	ST-1009	Disk Arm Frame Assembly
5	SS-1011	Disk Blade Arm Assembly
6	ST-0013	Retainer Bracket
7	ST-0025	Disk Arm Pivot Bushing
8	ST-1057	Shank Arm Pivot Bolt w/ 1" Machine Bushing, Lockwasher & Nut
9	ST-0031	Spring Retainer
10	ST-0083	Mud Scraper Bracket – Optional
11	ST-0120	Mud Scraper Blade – Optional
12	ST-0147	Closer Wheel Tension Spring
13	ST-0154 ST-0156 ST-0297	18" Notched Disk Blade – Standard 18" Smooth Disk Blade – Optional 18" 12 Wave Coulter – Optional
14	RB-0025	1/2"-13 x 2" x 3 1/2" U-Bolt w/ Flat washer, Lock washer & Nut
15		5/8"-11 x 3 1/2" Bolt w/ Locknut
16		1/2"-13 x 1" Carriage Bolt w/ Flat washer, Lock washer & Nut
17	ST-0184	5/8" Slotted Nut w/ Small Flat washer & 1/8" x 1 1/4" Cotter Pin
18		5/16"-18 x 3/4" Carriage Bolt w/ Lock washer & Nut
19		3/8"-16 x 1 1/4" Bolt w/ Lock washer & Nut
20	ST-0183	Disk Blade Bearing (LM11949) Hub Bearing Race (LM11910)
21	ST-0186	Disk Blade Dust Cap
22	ST-0185	Disk Blade Spindle Seal (CR10035)

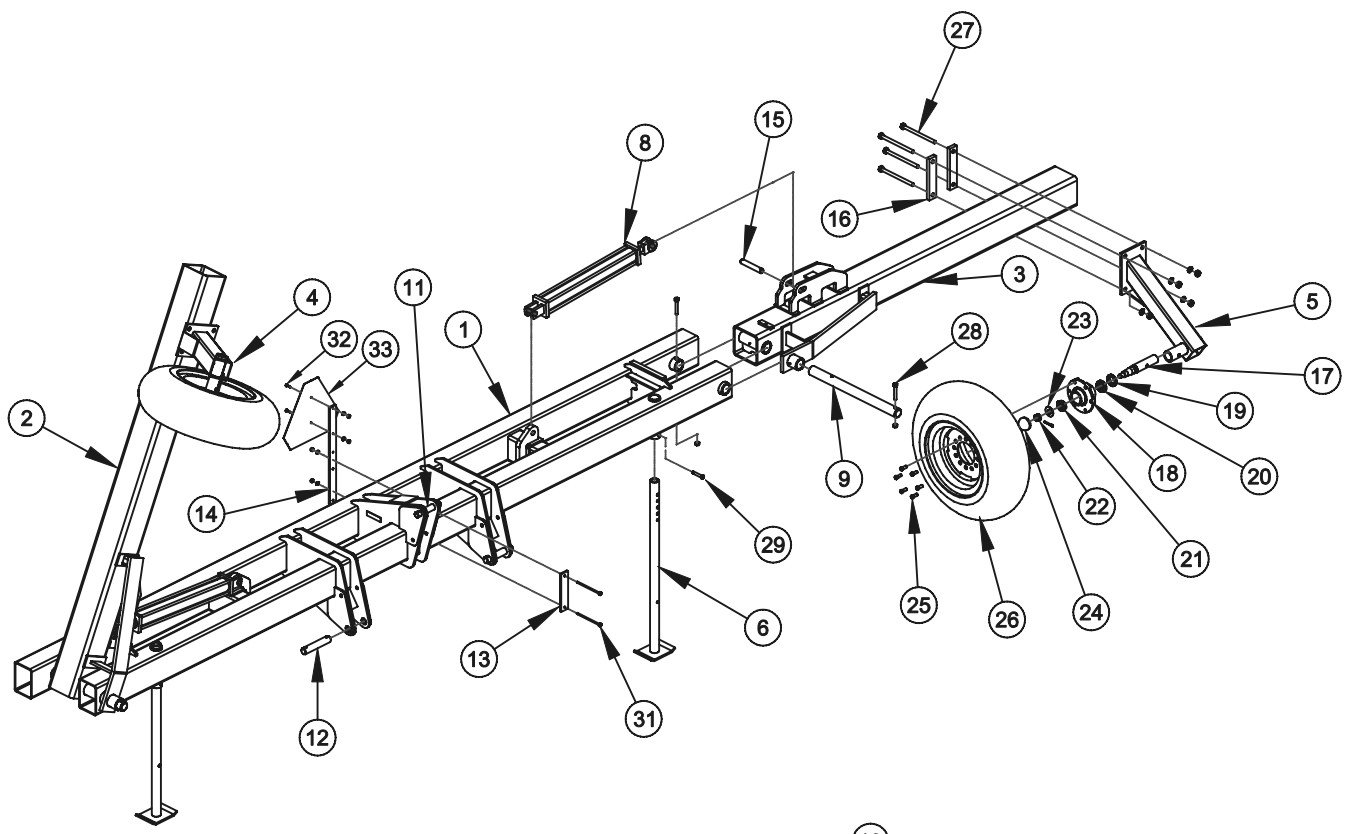
6 & 8 Row Rigid 3 Point Toolbar Parts Diagram



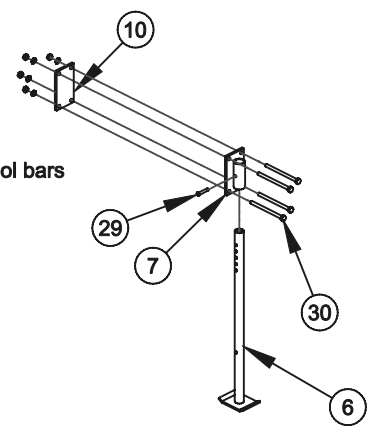
6 & 8 Row Rigid 3 Point Toolbar Parts Description

Item No.	Part No.	Part Name / Description
1	ST-1036	Lower L.H. Inside Bracket Assembly
2	ST-1038	Lower L.H. Outside Bracket Assembly
3	ST-1035	Lower R.H. Inside Bracket Assembly
4	ST-1037	Lower R.H. Outside Bracket Assembly
5	ST-1019	TB Stand Assembly
6	ST-1018	TB Stand Retainer Assembly
7	ST-0063 ST-0064	8 @ 30" Row Tool Bar (228") 6 @ 30" Row Tool Bar (168") Call for Special Length Tool Bars
8	ST-0057	Cat. III Upper Link Pin w/ 7/16" Lynch Pin
9	ST-0194	Back Plate
10	ST-0136	S.M.V. Bracket
11	ST-0058	Cat. II Upper Link Pin w 7/16" Lynch Pin
12	ST-0079	TB Stand Mounting Plate
13	ST-0059	Lower Link Pin w/ 7/16" Lynch Pin
14	ST-0050	R.H. Upper Link
15	ST-0051	L.H. Upper Link
16	ST-0060	Lower Link Pin Spacer
17	ST-0056	3 Point Back Plate
18		1"-8 x 9 1/2" Gr. 5 Bolt w/ Lock washer & Nut
19		5/8"-11 x 9" Gr. 5 Bolt w/ Lock washer & Nut
20		3/8"-16 x 9" Gr. 5 Bolt w/ Lock washer & Nut
21		1/2" x 3" Clevis Pin w/ #10 Keeper Pin
		Light Kit (not shown) - Optional
22		1/4"-20 x 1" Gr. 5 Bolt w/ Lock washer & Nut
23	ST-0193	S. M. V. Sign

8 & 12 Row Folding 3 Point Toolbar Parts Diagram



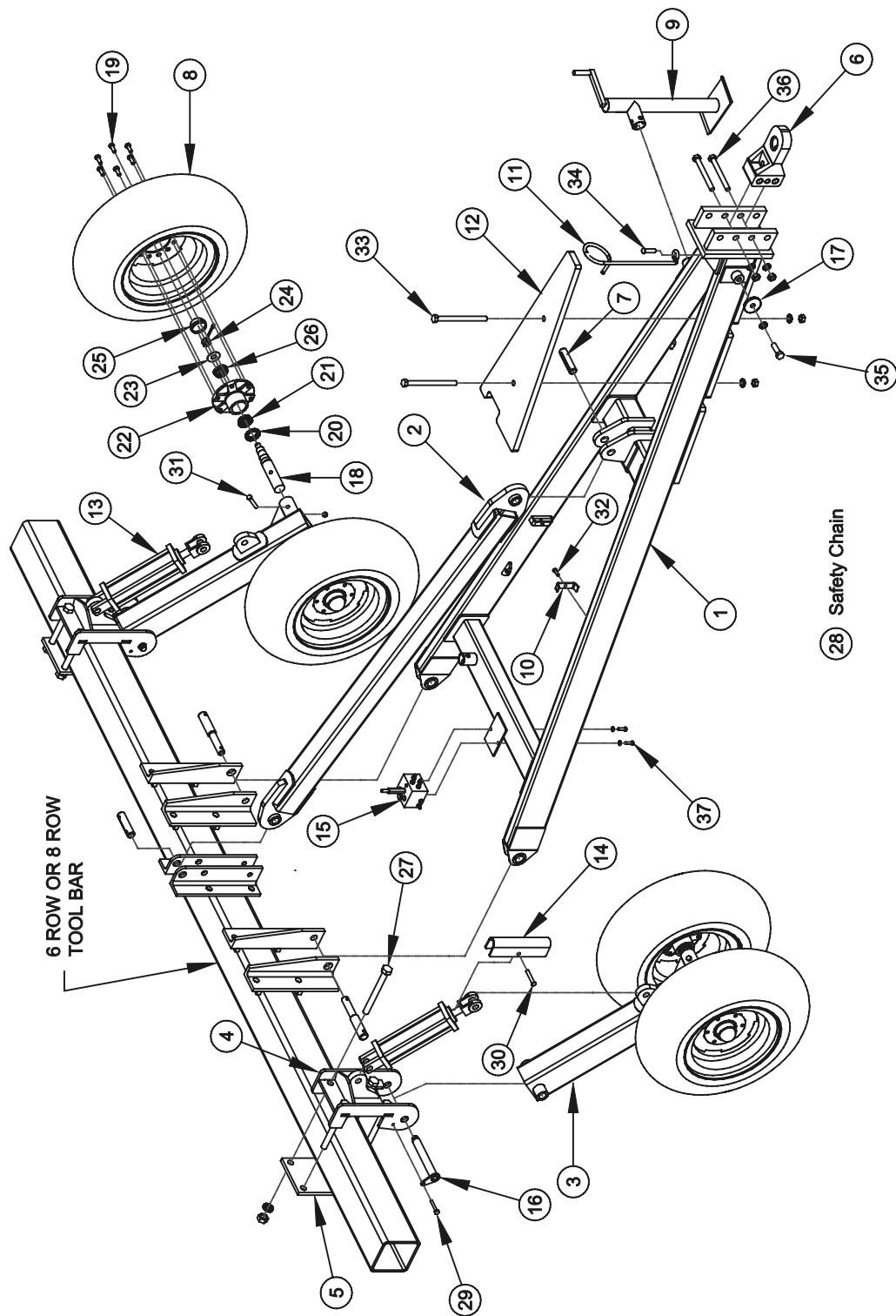
* Required on older tool bars



8 & 12 Row Folding 3 Point Toolbar Parts Description

Item No.	Part No.	Part Name / Description
1	ST-1052	8 Row TB Base Assembly
1	ST-1026	12 Row TB Base Assembly
2	ST-1056	R.H. 8 Row TB Wing Assembly
2	ST-1028	R.H. 12 Row TB Wing Assembly
3	ST-1055	L.H. 8 Row TB Wing Assembly
3	ST-1027	L.H. 12 Row TB Wing Assembly
4	ST-1030	R.H. Gage Wheel Assembly
5	ST-1029	L.H. Gage Wheel Assembly
6	ST-1019	TB Stand Assembly
7	ST-1018	TB Stand Retainer Assembly
8		4" x 24" (3000psi) Cylinder w/Pins & Clips
9	ST-0113	Hinge Pin
10	ST-0079	TB Stand Mount Plate
11	ST-0111	Top Link Pin w/ 7/16" Lynch Pin
12	ST-0112	Lower Link Pin w/ 7/16" Lynch Pin
13	ST-0194	Back Plate
14	ST-0136	S. M. V. Bracket
15	ST-0117	Wing Cylinder Pin w/ 1" Flatwasher & 3/16" Cotter Pin
16	ST-0022	7" Back Plate
17	FC-0058	6 Bolt Spindle
18	FC-0061	Standard 6-Bolt Hub
19	FC-0059	Standard Spindle Seal (CR16289)
20	FC-0060	Inner Bearing (JL69349)
21	FC-0062	Outer Bearing (LM67048)
22	FC-0065	Standard Spindle Nut w/ Standard Spindle Cotter Pin
23	FC-0063	Standard Spindle Washer
24	FC-0066	Standard Dust Cap
25	FC-0068	Standard Hub Bolt
26		15-6 6 on 6 Rim w/ 7.60L-15 Tire
27		3/4"-10 x 7" Gr. 5 Bolt w/ Lockwasher & Nut
28		1/2"-13 x 3 1/2" Gr. 5 Bolt w/ Locknut
29		1/2" x 3" Clevis Pin w/ #10 Keeper Pin
30		5/8"-11 x 7" Gr. 5 Bolt w/ Lockwasher & Nut
31		3/8"-16 x 7" Gr. 5 Bolt w/ Lockwasher & Nut
	ST-1049	8 Row Folding Tool Bar Hose Kit (not shown)
	ST-1048	12 Row Folding Tool Bar Hose Kit (not shown)
		Light Kit (not shown) - Optional
32		1/4"-20 x 1" Gr. 5 Bolt w/ Lockwasher & Nut
33	ST-0193	S. M. V. Sign

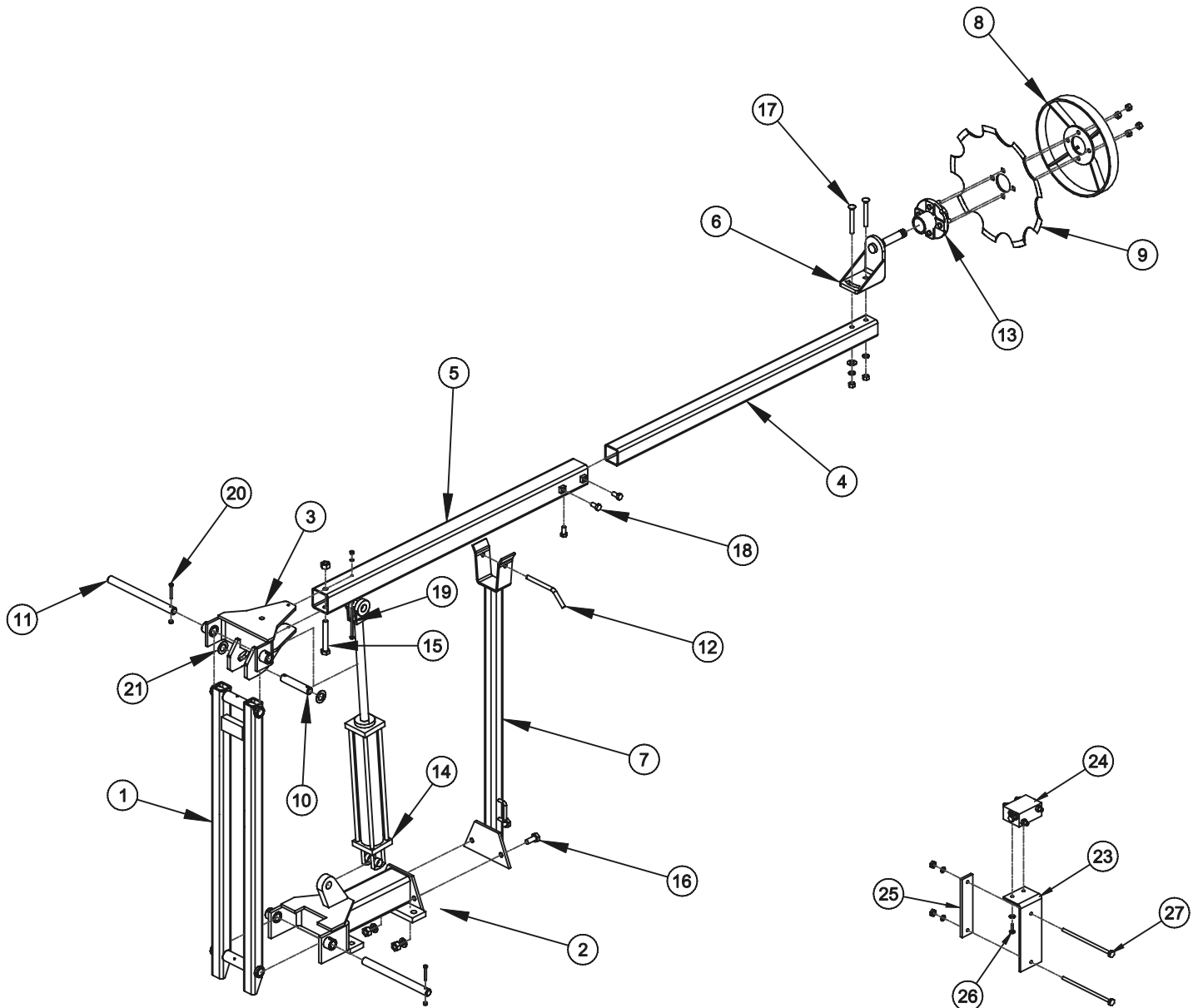
PST Pull Package Parts Diagram



PST Pull Package Parts Description

Item No	Part No.	Part Name / Description
1	ST-1662	A-Frame Assembly
2	ST-1668	Upper Link Assembly
3	ST-1669	Axle Arm Assembly
4	ST-1672 ST-1670	Axle Mount Assembly (7" tall frame) Axle Mount Assembly (6" tall frame)
5	ST-0716 ST-0709	Axle Mount Back Plate (7" tall frame) Axle Mount Back Plate (6" tall frame)
6	ST-0720	Cat III Cast Hitch
7	ST-0718	Top Link Pin w/ 3/8"x 2 1/2" Cotter Pin
8		15-8 6 on 6 Rim w/ 11L - 15 Tire
9	FC-0054	Jack Stand
10	ST-0687	Hose Holder Clamp
11	FC-0055	Hose Holder
12	ST-0681	Bolt on Hitch Weight - Optional
13	ST-0697 ST-0721	3.5" x 10" Cylinder w/ Pins & Clips (4, 6 & 8 Row Rigid) 4" x 10" Cylinder w/ Pins & Clips (8 & 12 Row Folding)
14	ST-0695 ST-0722	1 1/2" x 10" Cylinder Transport Lock (3.5 x 10) 1 7/8" x 10" Cylinder Transport Lock (4 x 10)
15	ST-0696	Main Divider Valve
16	ST-1671	Axle Pin Assembly
17	ST-0688	Safety Chain Cap
18	FC-0058	6 Bolt Spindle
19	FC-0068	Standard Hub Bolt
20	FC-0059	Standard Spindle Seal (CR16289)
21	FC-0060	Inner Bearing (JL69349)
22	FC-0061	Standard 6-Bolt Hub (includes inner & outer races)
23	FC-0063	Standard Spindle Washer
24	FC-0065	Standard Spindle Nut w/ 5/32" x 2" Cotter Pin
25	FC-0066	Standard Dust Cap
26	FC-0062	Outer Bearing (LM67048)
27		1"-8 x 7 1/2" Gr. 5 Bolt w/ Lock washer & Nut (5" deep) 1"-8 x 8 1/2" Gr. 5 Bolt w/ Lock washer & Nut (6" deep) 1"-8 x 9 1/2" Gr. 5 Bolt w/ Lock washer & Nut (7" deep)
28		20,200# Rated Safety Chain (not shown)
29		3/8"-16 x 1 1/4" Gr. 5 Bolt w/ Locknut
30		1/2"x 2 1/2" Clevis Pin w/ #120 Bowtie Keeper
31		1/2"-13 x 3" Gr. 5 Bolt w/ Locknut
32		3/8"-16 x 1 1/4" Gr. 5 Bolt
33		5/8"-11 x 7 1/2" Gr. 5 Bolt w/ Lock washer & Nut - Optional
34		5/8"-11 x 2" Gr. 5 Carriage Bolt w/ Lock washer & Nut
35		3/4"-10 x 1 1/2" Gr. 5 Bolt w/ Lock washer
36		1" -8 x 7 1/2" Gr. 5 Bolt w/ Lock washer & Nut
37		3/8-16 x 1" Gr. 5 Bolt w/ Lock washer

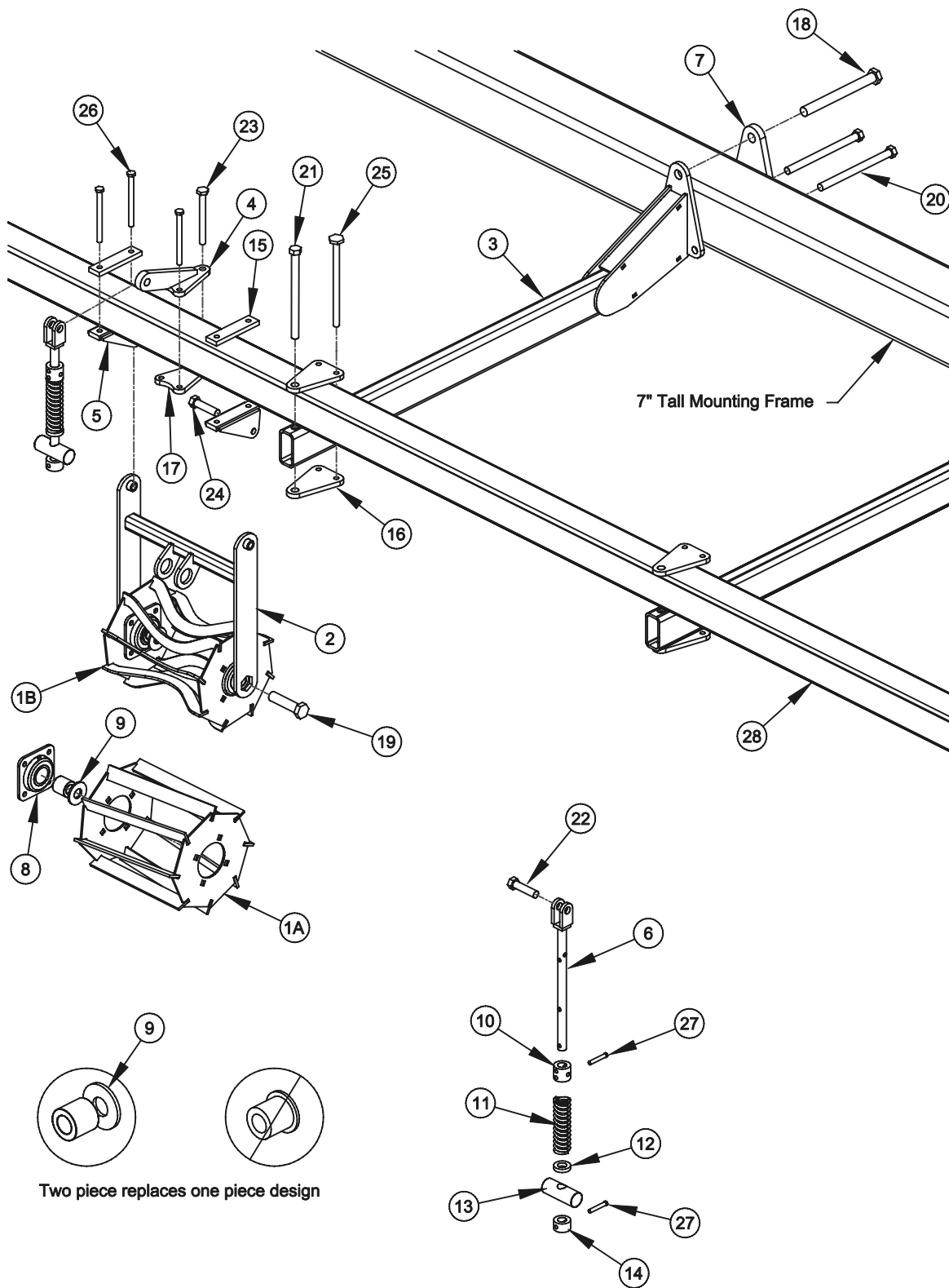
Bifold Row Markers Parts Diagram



Bifold Row Markers Parts Description

Item No.	Part No.	Part Name / Description
1	ST-1800	Inner Fold Assembly
2	ST-1801	Bifold Base Assembly
3	ST-1802	Break Away Hinge Assembly
4	ST-1804	Inside Arm Assembly
5	ST-1805	Outside Arm Assembly
6	ST-1806	Disk Blade Arm Assembly
7	ST-1807	Wing Stand Assembly
8	ST-1809	Depth Band Assembly - Optional
9	ST-0154	Notched Disk Blade
10	ST-0817	Bifold Cylinder Pin
11	ST-0818	Bifold Pivot Pin
12	ST-0830	Transport Lock Pin
13	ST-0834	4 Bolt Hub Assembly w/ Lug Nuts
14	ST-0836	2.5" x 16" Cylinder w/ Pins & Clips
15		5/8"-11 x 4 1/2" Hex Cap Bolt w/ Locknut
16		5/8"-11 x 1 1/2" Hex Cap Bolt w/ Lock washer & Nut
17		1/2"-13 x 4" Carriage Bolt w/ Flat washer, Lock washer and Nut
18		1/2"-13 x 1" Hex Cap Bolt
19		1/4"-20 x 4 1/2" Hex Cap Bolt w/ Lock washer & Nut
20		1/4"-20 x 2" Hex Cap Bolt w/ Locknut
21		1" SAE Flat washer
22	ST-1808	Bifold Row Marker Hose Kit (not shown)
	ST-0831	20 lbs. Marker Weight (not shown) - Optional
23	ST-0137	Marker Valve Bracket
24	ST-0175	Marker Sequence Valve
25	ST-0194	Back Plate
26		3/8"-16 x 1" Gr. 5 Bolt w/ Lock washer
27	7" x 7" Frame	3/8"-16 x 9" Gr. 5 Bolt w/ Lock washer & Nut
27	5" x 7" Frame	3/8"-16 x 7" Gr. 5 Bolt w/ Lock washer & Nut

PST Roller Parts Diagram



PST Roller Parts Description

Item No.	Part No.	Part Name / Description
1A	ST-1067	Straight Roller Weldment
1B	ST-1069	Contoured Roller Weldment
2	ST-1050	Roller Frame Assembly
3	ST-1066	Roller Mount Arm Assembly
4	ST-1062	Spring Rod Mount Assembly
5	ST-1051	Roller Frame Hanger Assembly
6	ST-1068	Spring Rod Assembly
7	ST-0217	Roller Mount Arm Back Plate
8	RB-0007	Flanged Disk Bearing
9	RB-1047	Bearing Spacer Assembly Includes RB-0009 & RB-0085 (two piece replaces one piece design)
10	ST-0229	Adjustment Collar
11	ST-0147	Tension Spring
12	ST-0221	3/8" Spring Rod Cap
13	ST-0228	Spring Rod Pivot Pin
14	ST-0230	Collar Lock
15	ST-0177	Roller Frame Hanger Back Plate
16	ST-0219	Mount Arm/Tube Back Plate
17	ST-0224	Spring Rod Mount Back Plate
18A	5" x 7" Frame	1"-8 x 8" Gr.5 Bolt w/ Lock washer & Nut
18B	7" x 7" Frame	1"-8 x 10" Gr.5 Bolt w/ Lock washer & Nut
19		1"-8 x 3 3/4" Gr.5 Bolt w/ Lock washer & Nut
20A	5" x 7" Frame	3/4"-10 x 8" Gr.5 Bolt w/ Lock washer & Nut
20B	7" x 7" Frame	3/4"-10 x 10" Gr.5 Bolt w/ Lock washer & Nut
21		3/4"-10 x 10" Gr.5 Bolt w/ Lock washer & Nut
22		3/4"-10 x 2 1/2" Gr.5 Bolt w/ Locknut
23		5/8"-11 x 6" Gr.5 Bolt w/ Lock washer & Nut
24		5/8"-11 x 3" Gr.5 Bolt w/ Locknut
25		1/2"-13 x 10" Gr.5 Bolt w/ Lock washer & Nut
26		1/2"-13 x 6" Gr.5 Bolt w/ Lock washer & Nut
27		3/8"-16 x 2 1/4" Gr.5 Bolt w/ Locknut
28		1/4" x 4" x 4" Mounting Tube (Specify Tool Bar Length)

Registration Information

Serial Number _____

Date Purchased _____

Dealer Purchased From

Name: _____

Address: _____

City: _____ State: _____ Zip: _____

Registration Form - "SS" Series Precision Strip Till

Please Return Promptly

Name: _____

Address : _____

City: _____ State : _____ Zip : _____

Number of Row Units _____

Serial Number _____

- Tool Bar** None 4 Row 6 Row 8 Row
 Folding 8 Row Folding 12 Row
 Folding 16 Row Folding 24 Row
- Markers** None 4 Row 6 Row 8 Row
 Folding 8 Row Folding 12 Row
- Coulters** 17" Coulters 17" Turbo Blade 20" Coulters
- Disks** Notched Smooth 12 Wave Coulters
- Rollers** None Straight Contoured
- Options** Shear Bolt Spring Reset
 Fertilizer Tubes Mud Scrapers Down Pressure Kit
 Trash Wheel Lock Down Kit Pull Package

Dealer Purchased From

Name : _____

Address : _____

City : _____ State : _____ Zip : _____

Mail To Remlinger Manufacturing Company, Inc.
16394 U.S. 224
P.O. Box 299
Kalida, OH 45853

Fax To 1-419-532-2244

Thank You for Purchasing Remlinger Strip Till Equipment.

