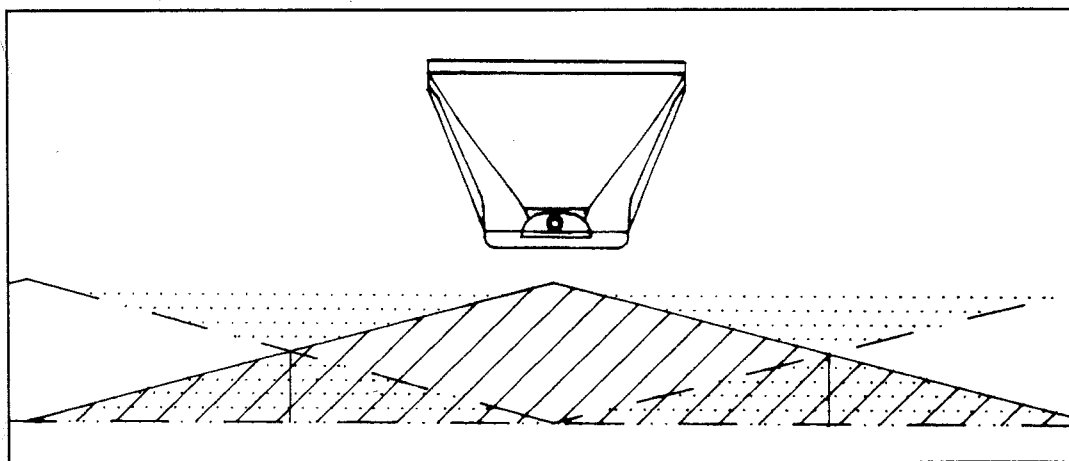
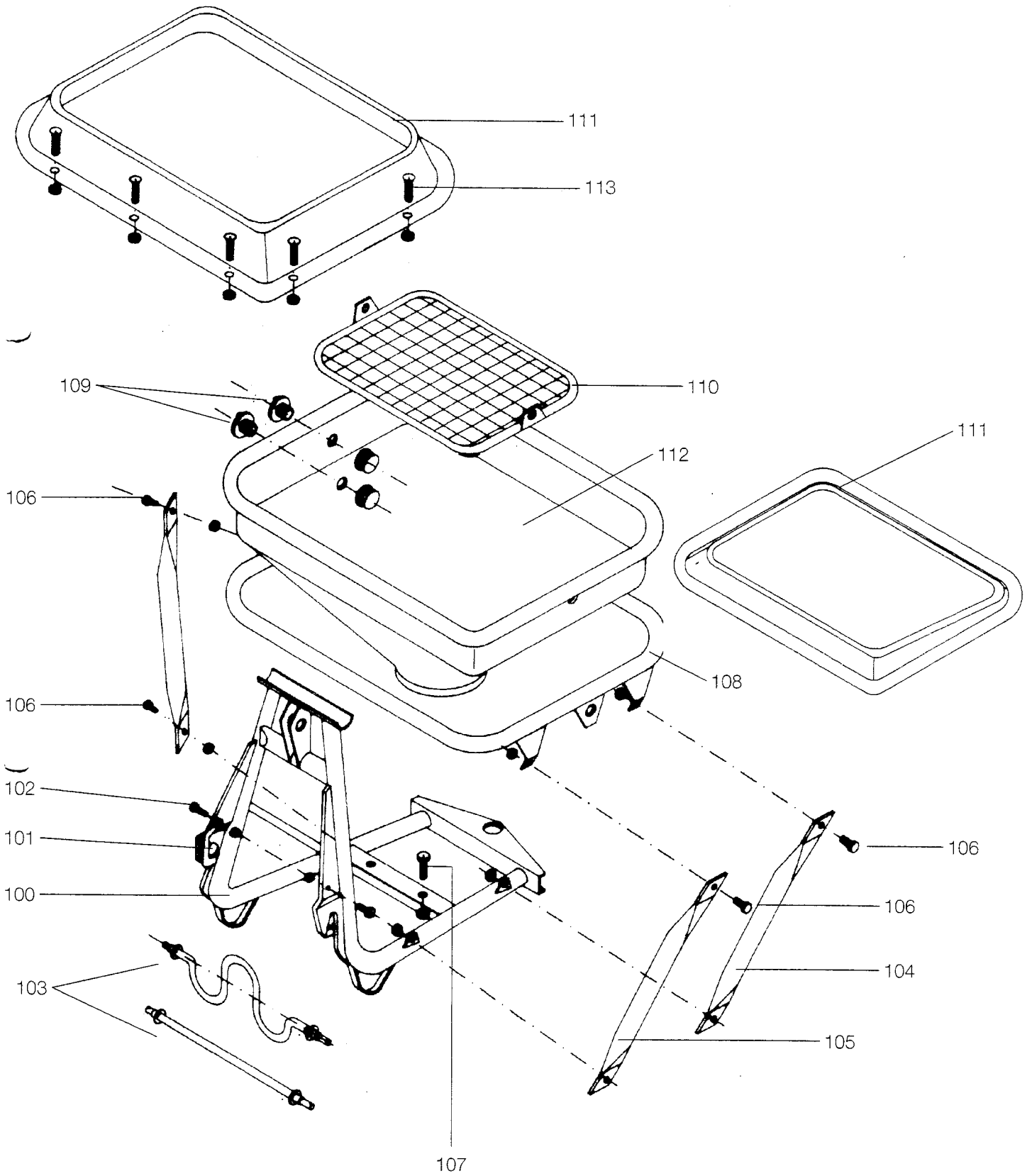


INSTRUCTION MANUAL AND

ILLUSTRATION OF PARTS FROM

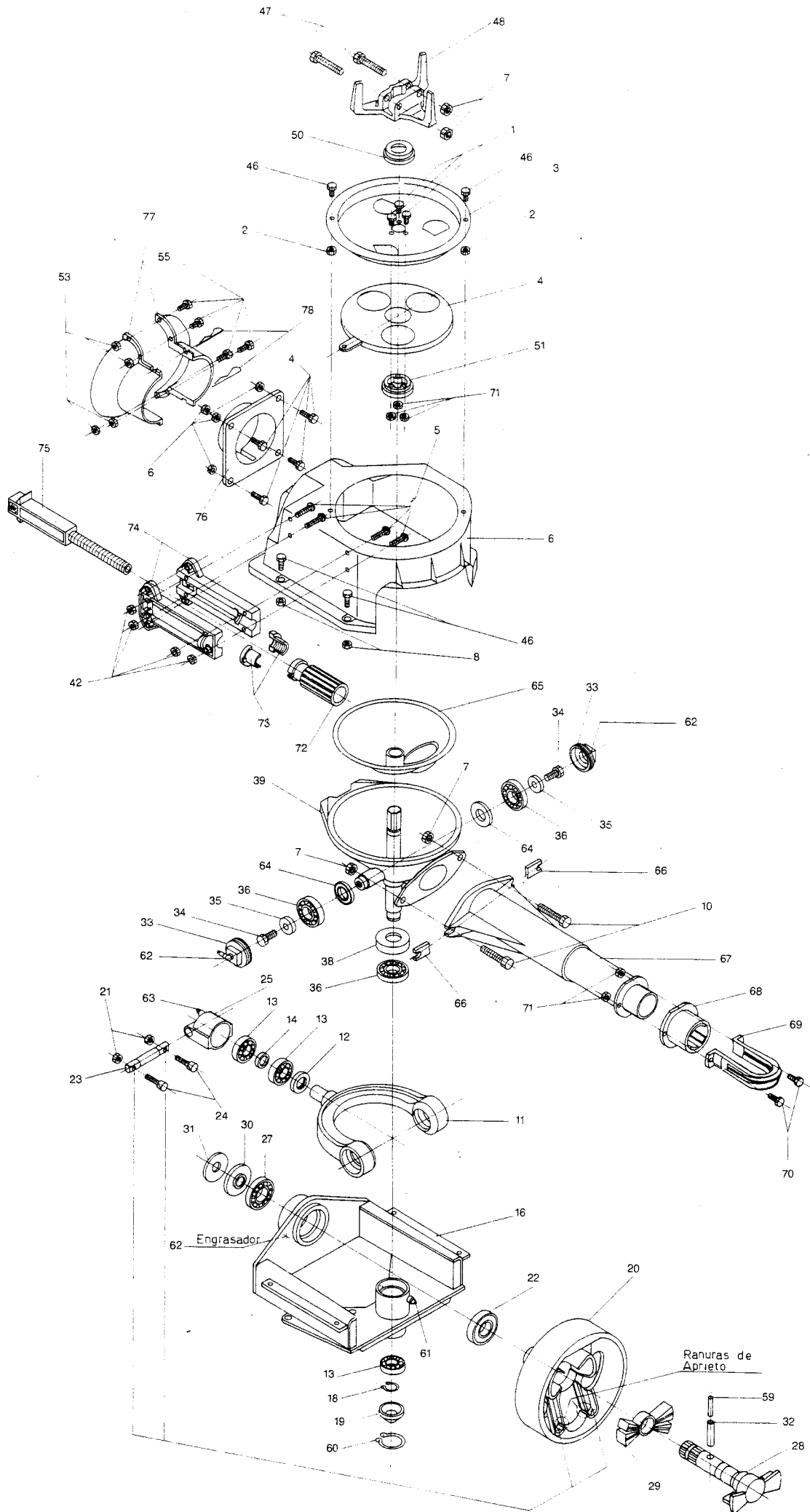
- PENDULAR FERTILIZER SPREADER -





Each spreader model has a different body, hopper, screen, etc. so if you wish to replace any of the pieces which appear in this drawing, please indicate the spreader model concerned.

Ref.	DENOMINATION
100	Frame
101	Fast hook-up latch
102	Screw 10 x 35 and nut
103	Hook-up bars (indicate model)
104	Hook-up spindle 2
105	Hook-up spindle 2
106	Screw 10 x 25 and nut
107	Screw M 12 x 45 and nut
108	Chassis frame
109	1" threading and 1" stopper
110	Filter (optional)
111	Hopper supplement
112	Hopper
113	Screw 8 x 20 and nut



Reference	Denomination	Quantity
1	Screw M5 x 25	3
2	Nut M8	6
3	Regulating disc (S)	1
4	Regulating disc (I)	1
5	Flat head screw 6 x 70	4
6	Protective cover	1
7	Nuts M12	4
10	Screws 12 x 50	2
11	Jaw	1
12	Stopper 30 x 52 x 6.5	1
13	Bearings 6205	3
14	Separator	1
16	Body	1
18	Bracket clip E25	1
19	Cover	1
20	Steering wheel	1
21	Nut M10	2
22	Bearing 6010 2RS	1
23	Axle positioning	1
24	Conehead screws	2
25	Cog	1
27	Bearing 6009 2RS	1
28	Bearing	1
29	Shock absorber	1
30	Dust cover	1
31	Washer D35	1
32	Bolt D8 x 60	1
33	Cover	2
34	Screw 12 x 30	2
35	Washer 40 x 12 x 8	2
36	Bearing 6206	3
38	Dust cover	1
39	Iron cone	1

Reference	Denomination	Quantity
42	Nut M6	4
46	Screw 8 x 25	6
47	Screw 12 x 70	2
48	Mixer	1
50	Nylon lock	1
51	Lower nylon lock	1
59	Bolt 5 x 60	1
60	Bracket clip I 52	1
61	Lubricator 3/8 SAE straight	1
62	Lubricator 3/8 SAE 90°	3
63	Lubricator 1/4 W straight	1
64	Stopper 35 x 56 x 5.8	2
65	Plastic cone	1
66	Tube support	2
67	Pendular tube	1
68	Bushing	1
69	Distribution fork	1
70	Screw 8 x 20	2
71	Nut M5	5
72	Control adjustment	1
73	Nut 2 average	1
74	Frame adjustment	2
75	Stopper adjustment	1
76	Protective support	1
77	Protector	2
78	Bolt 5	2